



Acme Sanitary Ware Co Ltd

Acme Building, 22-28 Nanking Street, Kowloon, Hong Kong
 Tel: 2388 7171 Fax: 2710 8012
 E-mail: acme@acmesanitary.com.hk
 Website: www.acmesanitaryware.com.hk



Pure Freude
an Wasser

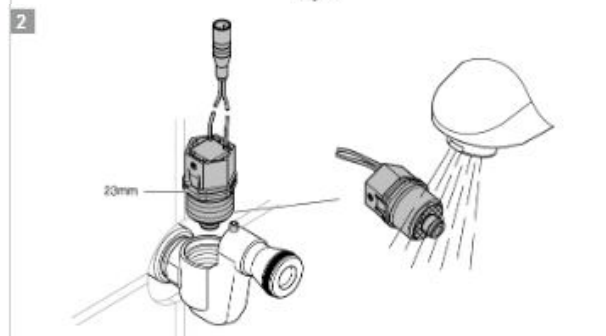
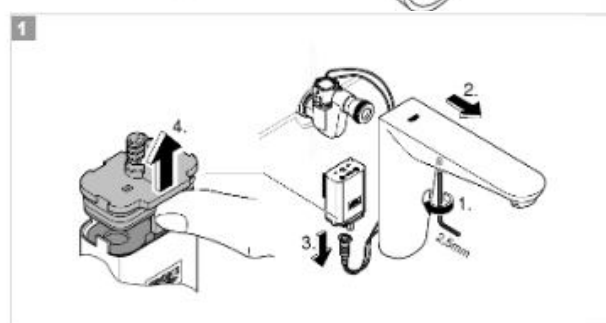
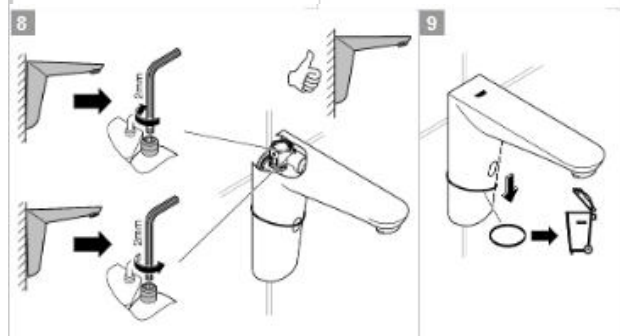
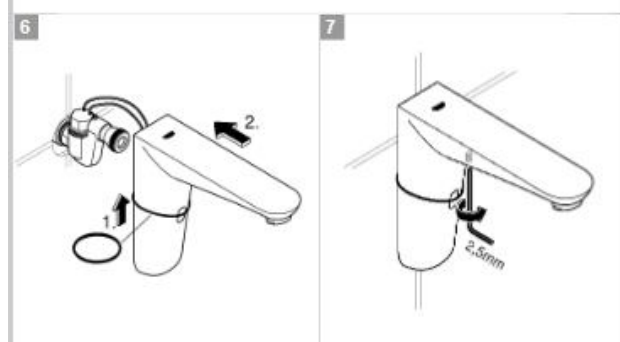
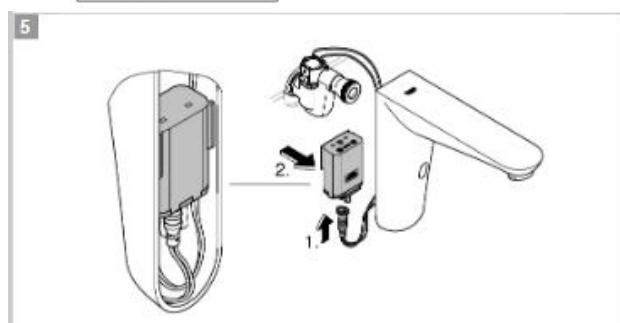
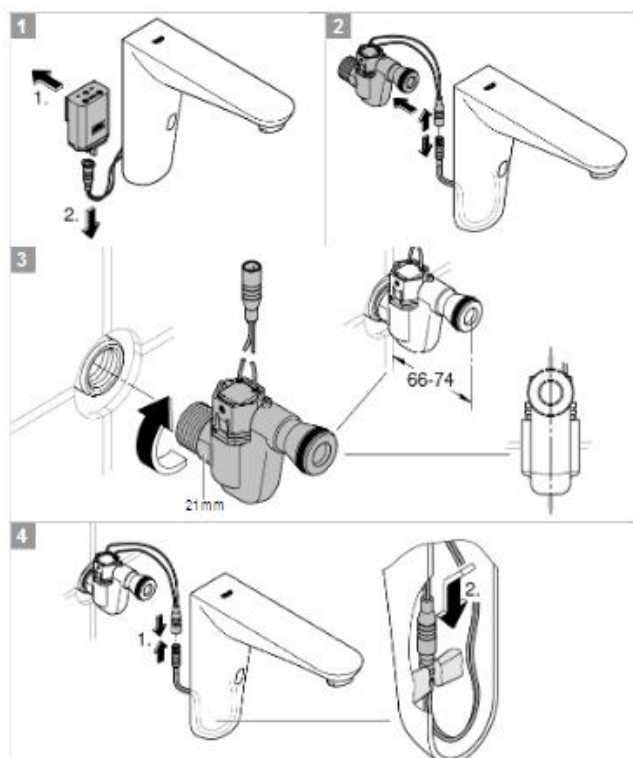
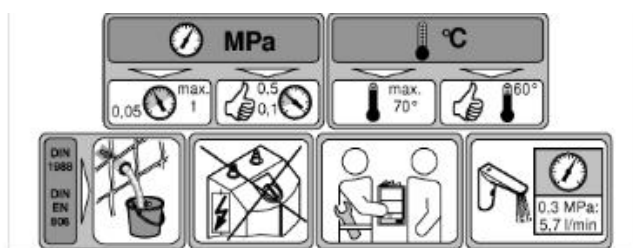
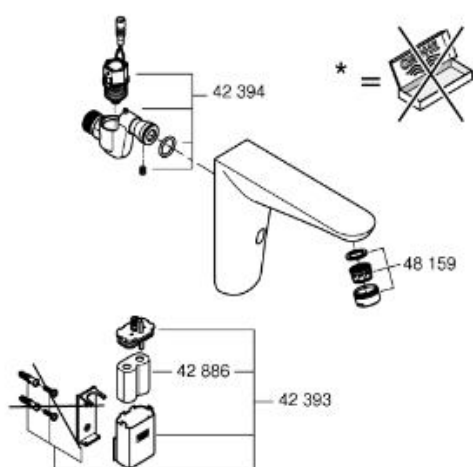
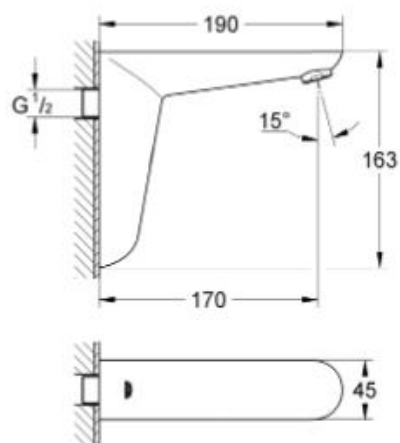
PROJECT		REF		REV	ITEM CODE	
LOCATION		DATE			PAGE	

SANITARY WARE SPECIFICATION SHEET

Item Descriptions	GROHE (Germany) "Euroeco Cosmopolitan E" Chrome plated wall mounted infra-red electronic basin tap 6V battery DC; Nominal flow rate 2 l/min in WELS Grade 1; Registration No. TN 17-0025	<div>Illustration/ Drawing</div> <div></div>												
Dimensions	W190 x L45 x H163 mm													
Model	36274000													
Finish	Chrome Plated													
Manufacturer	GROHE Limited													
Supplier	Acme Sanitary Ware Co. Ltd Mr. Eric Wong/ Mr. Wilson Hung													
Contact Tel/Fax	(852) 2388-7171 / (852) 2710-8012													
E-mail	acme@acmesanitary.com.hk													
Website	www.acmesanitary.com.hk													
<div>Euroeco Cosmopolitan E</div> <div>Infra-red electronic wall basin tap without mixing device</div> <div>with lithium battery 6 V DC, CR-P2</div> <div>metal body</div> <div>LongLife battery electronic</div> <div>battery lifetime: approx. 7 years (150 actuations a day)</div> <div>multistage battery status display</div> <div>7 pre-set programs:</div> <div>with 24/72 hours autoflush</div> <div>time or user dependent</div> <div>with cleaning mode</div> <div>safety stop after 60 sec.</div> <div>additional functions by remote control:</div> <div>adjustable flow time</div> <div>adjustable reflection range by remote</div> <div>activation of thermal disinfection for 3.5 or 11 min by hand</div> <div>mousseur 9 l/min</div> <div>for cold or premixed water</div> <div>CE approved</div> <div>GROHE EcoJoy® technology for less water</div> <div>and perfect flow</div> <div>GROHE StarLight® finish</div> <div></div> <div><table><tr><td>Dynamic flow pressure (kPa)</td><td>50</td><td>150</td><td>250</td><td>350</td><td>500</td></tr><tr><td>Flow rate (l / min)</td><td>1.2</td><td>1.8</td><td>2.1</td><td>2.1</td><td>2.1</td></tr></table></div>			Dynamic flow pressure (kPa)	50	150	250	350	500	Flow rate (l / min)	1.2	1.8	2.1	2.1	2.1
Dynamic flow pressure (kPa)	50	150	250	350	500									
Flow rate (l / min)	1.2	1.8	2.1	2.1	2.1									

Note:

* All information of the above is for the reference only. No prior notice is made if any changes.





自願參與用水效益標籤計劃 - 水龍頭
Voluntary Water Efficiency Labelling Scheme - Water Taps

Certificate of 註冊證書
Registration

茲證明

This is to certify that

Grohe Hong Kong Limited

將下列水龍頭在本計劃內註冊：
has registered the following water tap under this scheme :

牌 子 / Brand	:	GROHE
型 號 / Model	:	36274000
種 類 / Type	:	Non-mixing
原產地 / Country or Region Origin	:	Germany

在用水效益標籤上展示的標誌

Symbolic Presentation on the Water Efficiency Label :



滴水點

Water droplet(s)

用水效益級別

Water Efficiency Grade :

1

with additional merit*

耗水量

Water Consumption :

2

公升/分鐘

litres/minute

*with additional merit of "Automatic closing mechanism"

簽發日期：
Date of Issue:

29 September 2017



水務署
Water Supplies Department



水務署署長(周世威代行)
for Director of Water Supplies



水務署

Water Supplies Department

香港灣仔告士打道七號入境事務大樓

Immigration Tower, 7 Gloucester Road, Hong Kong

電子郵遞

e-mail

wsdinfo@wsd.gov.hk

電話

Telephone

2829 4355

圖文傳真

Facsimile

2824 0578

檔號

Reference

(2) in WSD 3321/17 Pt.1 T/J(1124)

12 September 2017



Approval of "GROHE" Sensor Tap

Your letter ref. WRC/1285 dated 21 August 2017 refers.

Having considered the test report ref. J19213r3 issued on 14 July 2017 by Nutek Systems (HK) Ltd., this Authority accepts that the fitting described below complies with, and its use when correctly installed does not contravene, the Waterworks Ordinance and Regulations.

Name of Manufacturer: Grohe AG

Country of Origin: Germany

Brand: Grohe

Details of Fitting: 1/2" Infra-red electronic wall basin tap

Model: 36274000

Body Markings:



Expiry Date: 27 June 2022

This Authority hereby permits the use of the above fitting in fresh water plumbing systems subject to full adherence to Waterworks installation requirements. In particular, you are required to draw your customers' attention to the following requirement-

"A stop cock or gate valve must be installed at the upstream of the fitting for manual isolation of water supply." AND

"The main voltage operated sensor valve should comply with the electricity safety regulation for applications in bathroom, toilet etc."

A condition of this acceptance is that the fitting to be installed shall be replicas of the sample as certified by the testing agent mentioned above and without modifications. This acceptance may be withdrawn at any time if the standard of the fitting installed fails to meet that of the approved sample or if the fitting is found to be unsuitable for use in fresh water plumbing systems.

This acceptance is only applicable to the main body of the fitting, unless other specified.

For the use of the fitting in any project, the Acceptance Reference Number at the bottom of this letter must be quoted as a means of identification of acceptance of the fitting by this Authority.

Should you have any enquiries, please contact our Engineer Mr. Terry KUNG at tel. no. 2294 2656.

Yours faithfully,


(CHAN Chung Kun)
for Water Authority

c.c. WSD 3321/1/82] - without catalogue
 ME/MC] - with soft copy only